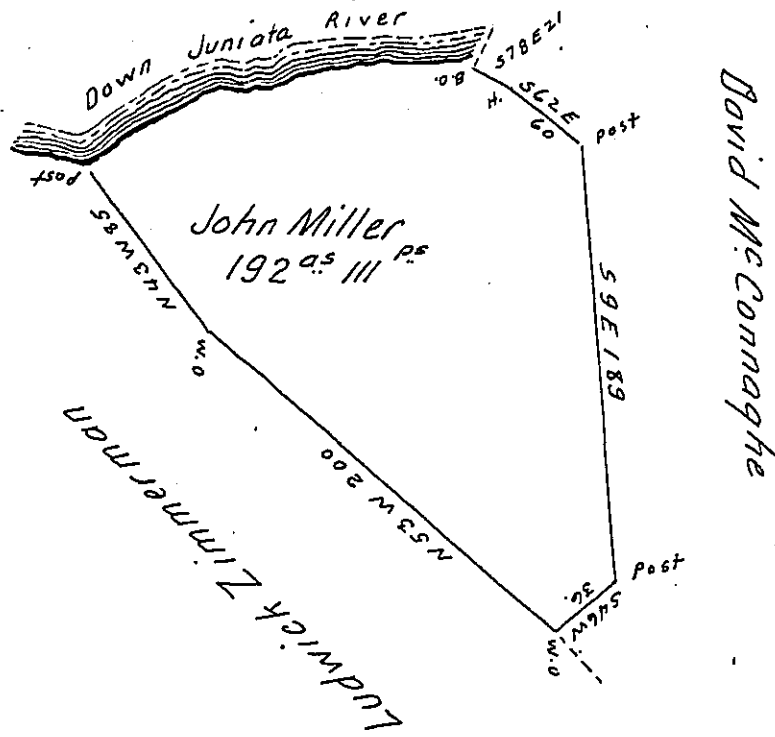


Courses and Distances
Down the River from
the Post to the B.O.

- N. 45 E 25
- N. 57 E 36
- N. 60 E 14
- N. 73 E 14
- N. 71 E 70 B.O.



Situate in Shirley Township in the County of Huntingdon a Small distance above
the Falls of Hughwick-Containing One hundred and Ninety two Acres and One
hundred and Eleven Perches and the Usual Allowance for Roads. Surveyed
the 8th day of March 1805. In pursuance of a Warrant dated the 4th day of June
1762.

Samuel Cochran Esquire S.G. John Canon D.S.

Note. I have not the Warrant to John Miller answering the above Date and
Description in my office. Mc. Physicks Receipt, showed to me is dated ~~the~~
June 5th 1762 is for 200^{acs} and Says on the East Side of Juniata-a Mile from
the Mouth of Hughwick Creek. on finding the Warrant the above blanks
can be filled up.

John Canon.

IN TESTIMONY that the above is a copy of the original remaining on file in
the Department of Internal Affairs of Pennsylvania, made
conformably to an Act of Assembly approved the 16th day of
February, 1833, I have hereunto set my Hand and caused
the Seal of said Department to be affixed at Harrisburg,
this thirteenth day of December 1905.

Loac P. Cannon
Secretary of Internal Affairs.